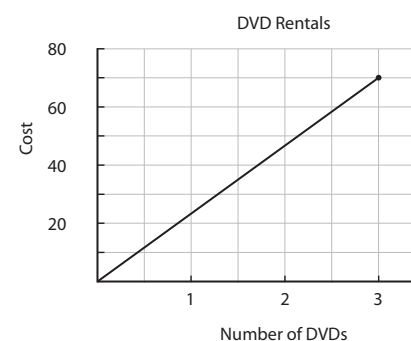


DVD Rentals

Rosa's parents just bought a new DVD player for the family. Rosa's mom asked her to research rental prices for DVDs online. More Movies has a yearly membership package. Rosa found the following table of prices on the company's web site.

More Movies DVD Rental-Membership Packages

Number of videos rented	0	5	10	15	20	25	30
Total cost	\$30	\$35	\$40	\$45	\$50	\$55	\$60



On the Deluxe DVD Rentals web site, Rosa found that there was no membership package offered. She made the graph on the right to show how the cost at Deluxe DVD Rentals is related to the number of videos rented.



If both rental services have a comparable selection of DVDs and Rosa's family will watch on average about two movies a month, which service should they choose? Explain how Rosa's family might decide which service to use. Using the information about each service, describe the pattern of change relating the number of DVDs rented to the total cost.