



Diagnostic Services

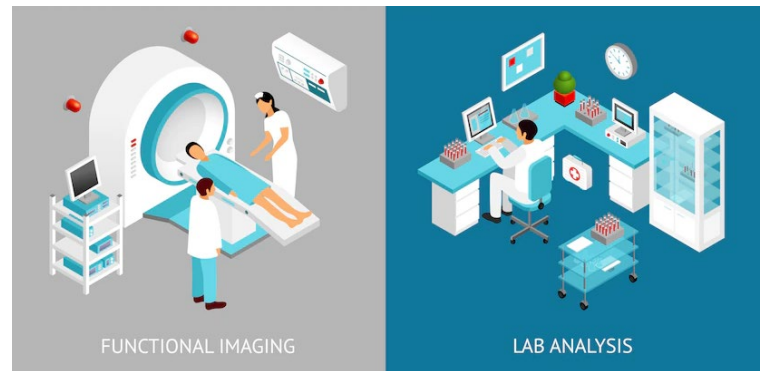
Health Science

JOB OUTLOOK

According to the Bureau of Labor Statistics, employment in diagnostic services careers is projected to grow faster or much faster than average through 2024. An increase in the aging population is expected to lead to a greater need to diagnose medical conditions through laboratory procedures, medical imaging, and electrocardiography. All careers in diagnostic medicine are considered to have a bright outlook in Tennessee.

OCCUPATION PROFILE

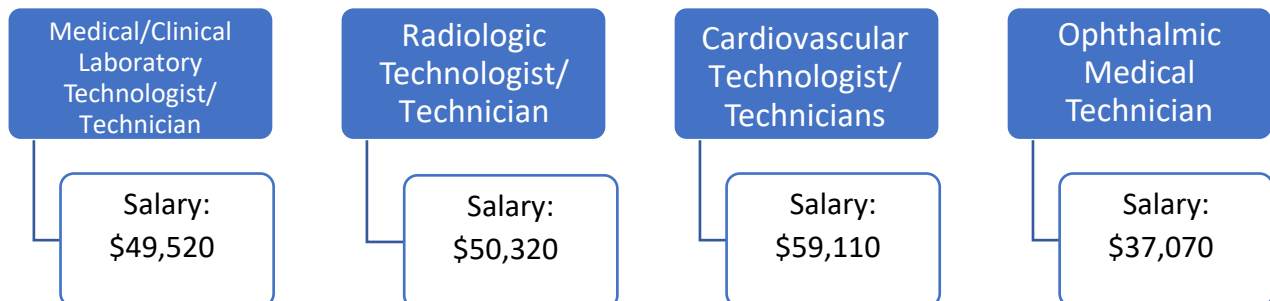
An increase in the population of older adults is expected to lead to a greater need for diagnosing medical conditions, such as cancer or type 2 diabetes, through laboratory procedures. Prenatal testing for various types of genetic conditions also is increasingly common. **Medical/Clinical laboratory technologists and technicians** will be in demand to use and maintain the equipment needed for diagnosis and treatment.



Falls and associated injuries, such as broken bones or head trauma, are common in older people and require X-rays or computed tomography (CT) scans to assess the extent of harm. In addition, MRI scans are useful for imaging various types of cancers, including of the brain, spine, and liver. As the number of falls and cancer cases rises, these **Radiologic technologists and technicians** will be needed to operate the equipment that helps detect, assess, and diagnose these injuries and diseases.

As the large baby-boom population continues to age, the need to diagnose medical conditions that affect older adults—such as blood clots and heart disease—will likely increase. Diagnostic medical sonographers and **cardiovascular technologists and technicians** use imaging technology as a tool to help physicians diagnose these conditions. Moreover, these workers will continue to be needed in healthcare settings to provide an alternative to imaging techniques that involve radiation.

Demand for **ophthalmic laboratory technicians** should increase, because many people need vision correction at some point in their lives. As the population continues to increase, more people will need corrective eyewear, such as glasses and contact lenses, to address nearsightedness, astigmatism, and other eye problems.



[Type here]



Memphis-Shelby County Schools



ROAD MAP TO SUCCESS

PROGRAM OF STUDY PROFILE

Diagnostic Services is designed to prepare students to pursue careers in the fields of radiology, medical laboratory, optometry, and other patient diagnostic procedures. Upon completion of this course, proficient students will be able to describe new and evolving diagnostic technologies, compare and contrast the features of healthcare systems, explain the legal and ethical ramifications of the healthcare setting, and begin to perform foundational healthcare skills. In addition, students will have the option to complete a clinical internship.

CAREER PATHWAY

SECONDARY EDUCATION

- * Health Science Education
- * Anatomy and Physiology
- * Diagnostic Medicine
- * Cardiovascular Services
- * Clinical Internship

CERTIFICATION

EKG Technician

ASSOCIATES

- * Cardiovascular Technology
- * Radiologic Technologist
- * Ophthalmic Medical Technologist

BACHELORS

- * B.S. Medical Laboratory Science
- * B.S. Radiologic Technology

MSCS PARTICIPATING SCHOOLS: Southwind HS

LOCAL EMPLOYERS: Baptist Memorial Hospital, Methodist LeBonheur Healthcare, Professional Pharmacy Services, Inc., Quest Diagnostics, Regional One Health, St. Francis Hospital, and St. Jude Children’s Research Hospital