



SCHOOL CHOICE *Guide* 2020-21



With hundreds of schools and programs across the 901, there's a place for everyone with Shelby County Schools!

Whether you're looking for a school with a specialized learning focus and competitive entry requirements, an innovative setting to meet your child's unique learning needs or a traditional K-12 setting in your neighborhood with a broad set of courses and extracurricular offerings, we've got the most choices for students and families.

- Award-winning principals & teachers!
- State & nationally recognized academic, arts & athletic programs!
- Wide variety of student clubs, extracurricular activities & support programs!
- Nearly 6,000 high-quality Pre-K seats!
- High schools that offer college credits, internships & 50+ career/technical certifications!
- So much more!

Table of Contents

School Choice ProcessPage 1

School Listings by Grade Level Page 2-4

Pre-K ProgramsPage 6

Optional SchoolsPage 7

College, Career & Technical Education (CCTE) ProgramsPage 8

Innovation Zone (iZone) Schools Page 10

Empowerment Zone (E-Zone) Schools..... Page 11

Alternative Schools Page 12

Student Services & Programs Page 13



School Choice Process

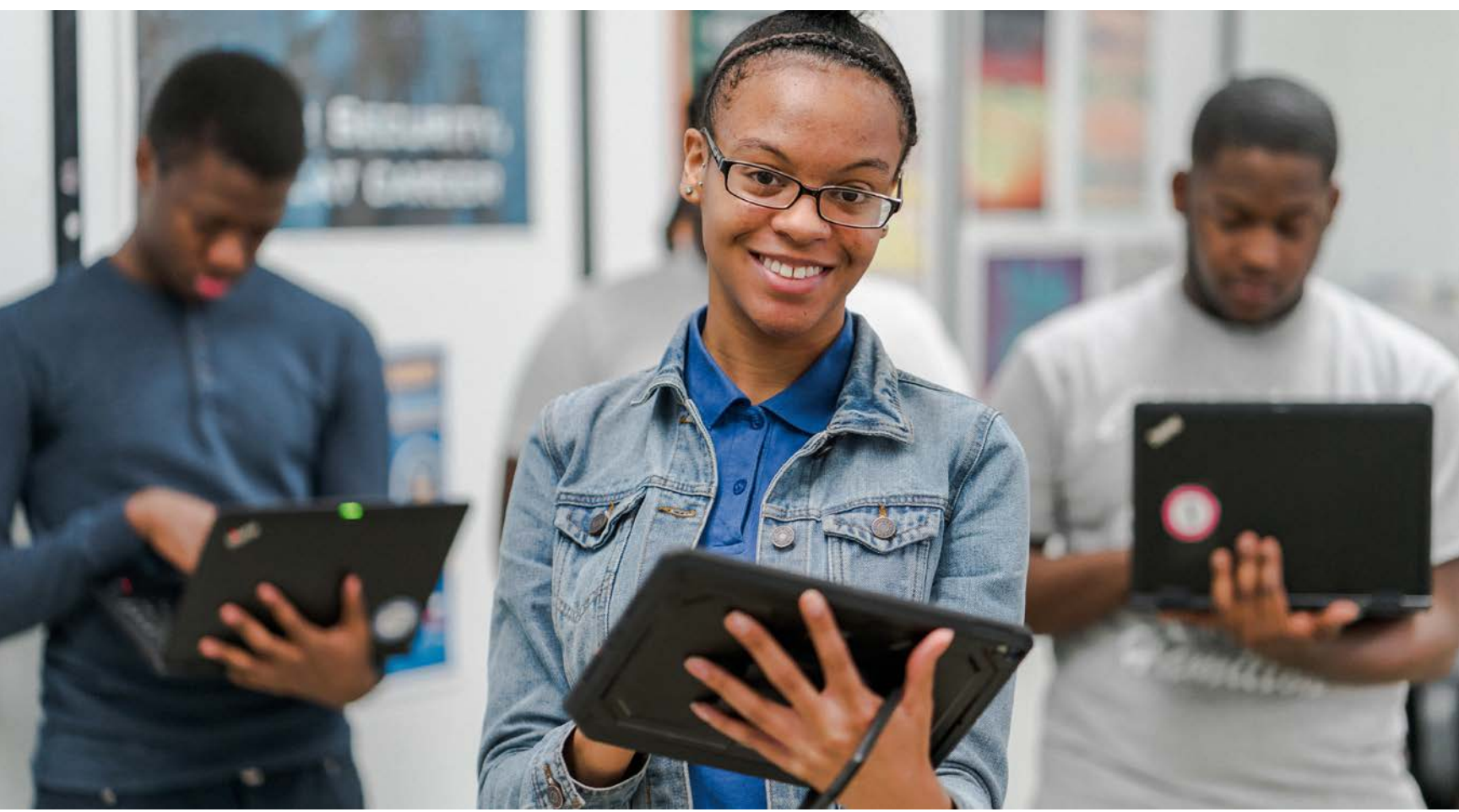
Our annual school choice process is open to all students in Shelby County. SCS schools are in high demand, so we encourage families to explore choices to be ready to apply as early as possible and have the best chance at getting a top choice. The choice process begins in late January and extends through the start of the school year. Our entire school choice application process is totally online to increase access for families and can be completed from any computer, tablet or smartphone with Internet access.

Applying for Optional Schools: Parents can apply for a spot in any of our 46 competitive, theme-based Optional schools with available space. All Optional schools have entrance requirements. Applications are processed in the order received unless applications exceed spaces; then, the first 80 percent are processed in the order received, and 20 percent are chosen by lottery.

Applying for General Choice: Parents can apply for any school in the District with available space through the General Choice process. This does not include Optional schools. All General Choice applications are processed in the order received.

Here are some tips to help with your search:

1. Check out our School Performance Scorecard to search and compare schools by programs, location, academic performance data and more. Go to www.scsk12.org/scorecard.
2. Contact schools you're interested in to schedule tours and ask for upcoming open houses.
3. Follow SCS and the schools you're interested in on Facebook, Twitter and Instagram for the latest school choice updates so you're ready to apply early for your new school home!
4. Need assistance? Contact our Parent Welcome Center at (901) 416-5300 or visit M-F at 2687 Avery Ave.



School List

Elementary Schools

A.B. Hill Elementary	Pre-K-5	345 E. Olive	416-7844
*New Alcy Area Elementary (21st Century School replacing Alcy ES, Charjean ES & Magnolia ES)	Pre-K-5	1750 Alcy Rd.	416-7800
Alton Elementary	Pre-K-5	2020 Alton Ave.	416-7430
Balmoral-Ridgeway Elementary	K-5	5095 Grosvenor Ave.	416-2128
Belle Forest Community School	K-5	3135 Ridgeway Rd.	416-7200
Berclair Elementary	Pre-K-5	810 N. Perkins Rd.	416-8800
Bethel Grove Elementary	Pre-K-5	2459 Arlington	416-5012
Brownsville Road Elementary	K-5	5292 Banbury	416-4300
Bruce Elementary	Pre-K-5	581 South Bellevue Ave.	416-4495
Campus Elementary	1-5	535 Zach Curlin	678-2285
Cherokee Elementary	Pre-K-5	3061 Kimball	416-5028
Chimneyrock Elementary	Pre-K-5	8601 Chimneyrock Blvd.	416-2067
Cordova Elementary	K-5	750 N. Sanga Rd.	416-1700
Cromwell Elementary	K-5	4989 Cromwell Ave.	416-2500
Crump Elementary	Pre-K-5	4405 Crump Rd.	416-1970
Delano Elementary	K-5	1716 Delano Ave.	416-3932
Dexter Elementary	Pre-K-5	7105 Dexter Rd.	416-0355
Double Tree Elementary	Pre-K-5	4560 Double Tree Rd.	416-8144
Downtown Elementary	Pre-K-5	10 N. Fourth	416-8400
Dunbar Elementary	Pre-K-5	2606 Select	416-5000
Egypt Elementary	Pre-K-5	4160 Karen Cv.	416-4150
Evans Elementary	Pre-K-5	4949 Cottonwood	416-2504
Ford Road Elementary	Pre-K-5	3336 Ford Rd.	416-8150
Fox Meadows Elementary	K-5	2960 Emerald	416-2530
Gardenview Elementary	Pre-K-5	4075 Hartz Dr.	416-3068
Germanshire Elementary	Pre-K-5	3965 S Germantown Rd.	416-3733
Germantown Elementary	Pre-K-5	2730 Cross Country	416-0945
Getwell Elementary	Pre-K-5	2795 Getwell Rd.	416-0267
Grahamwood Elementary	Pre-K-5	3950 Summer Ave.	416-5925
Hamilton Elementary	Pre-K-5	1378 Ethlyn Ave.	416-7826
Hawkins Mill Elementary	Pre-K-5	4295 Mountain Terrace	416-3944
Hickory Ridge Elementary	Pre-K-5	3890 Hickory Hill Rd.	416-1195
Highland Oaks Elementary	Pre-K-5	5252 Annandale Dr.	416-0328
Holmes Road Elementary	K-5	1083 Holmes Rd.	416-6469
Idlewild Elementary	K-5	1950 Linden	416-4566
Jackson Elementary	Pre-K-5	3925 Wales	416-4222
Kate Bond Elementary	K-5	2727 Kate Bond Rd.	416-0020
Keystone Elementary	K-5	4301 Old Allen Rd.	416-3924
Kingsbury Elementary	K-5	4055 Bayliss	416-6020
LaRose Elementary	Pre-K-5	864 Willoughby St.	416-7848
Levi Elementary	Pre-K-5	135 W Levi Rd.	416-8166
Lucie E. Campbell Elementary	Pre-K-5	3232 Birchfield	416-1000
Lucy Elementary	Pre-K-5	6269 Amhearst Rd.	416-2610
Macon-Hall Elementary	K-5	9800 Macon Rd.	416-2625
Newberry Elementary	Pre-K-5	5540 Newberry Ave.	416-2518
Northaven Elementary	Pre-K-5	5157 North Circle Rd.	416-2800
Oak Forest Elementary	Pre-K-5	7440 Nonconnah View Cv.	416-2257
Oakhaven Elementary	K-5	3795 Bishops Bridge	416-2320
Oakshire Elementary	Pre-K-5	1765 E. Holmes Rd.	416-3140
*Parkway Village Elementary (21st Century School replacing Goodlett ES & Knight Rd. ES)	Pre-K-5	3001 Goodlett Rd.	416-2510
Peabody Elementary	Pre-K-5	2086 Young Ave.	416-4806
Raleigh-Bartlett Meadows Elementary	Pre-K-5	5195 Twin Woods Ave.	416-4336
Richland Elementary	K-5	5440 Rich Rd.	416-2148
Ridgeway Early Learning Academy	Pre-K	3435 Ridge Meadows Parkway	416-1530
Riverwood Elementary	K-5	1330 Stern Ln.	416-2310

Robert R. Church Elementary	Pre-K-5	4100 Millbranch Rd.	416-0198
Ross Elementary	Pre-K-5	4890 Ross Rd.	416-1990
Rozelle Elementary	Pre-K-5	993 Roland St.	416-4612
Scenic Hills Elementary	Pre-K-5	3450 Scenic Hwy.	416-4342
Sea Isle Elementary	Pre-K-5	5250 Sea Isle Rd.	416-2104
Shady Grove Elementary	K-5	5360 Shady Grove	416-2166
Sharpe Elementary	Pre-K-5	3431 Sharpe	416-5020
Sheffield Elementary	Pre-K-5	4290 Chuck Rd.	416-2390
Shelby Oaks Elementary	K-5	6053 Summer Ave.	416-4305
Sherwood Elementary	Pre-K-5	1156 Robinhood Ln.	416-4864
South Park Elementary	Pre-K-5	1720 Getwell Rd.	416-5024
Southwind Elementary	Pre-K-5	8155 Meadowvale Dr.	416-2805
Springdale Elementary	Pre-K-5	880 N. Hollywood St.	416-4883
Treadwell Elementary	Pre-K-5	3538 Given Ave.	416-6130
Vollentine Elementary	Pre-K-5	1682 Vollentine	416-4632
Wells Station Elementary	Pre-K-5	1610 Wells Station	416-2172
Westhaven Elementary	Pre-K-5	4585 Hodge Rd.	416-8740
Westside Elementary	Pre-K-5	3347 Dawn Dr.	416-3725
White Station Elementary	K-5	4840 Chickasaw Rd.	416-8900
Whitehaven Elementary	Pre-K-5	4783 Elvis Presley Blvd.	416-7431
William H. Brewster Elementary	Pre-K-5	2605 Sam Cooper Blvd.	416-7150
Willow Oaks Elementary	Pre-K-5	4417 Willow	416-2198
Winchester Elementary	Pre-K-5	3587 Boeingshire Dr.	416-3152
Winridge Elementary	K-5	3500 Ridgeway Rd.	416-6618

K-8 Schools

Airways Achievement Academy	K-8	2601 Ketchum	416-5006
Barret's Chapel School	K-8	1020 Godwin Rd.	416-0325
Cummings School	K-8	1037 Cummings	416-7810
Douglass School	K-8	1650 Ash St.	416-5946
E.E. Jeter School	K-8	7662 Benjestown Rd.	416-2955
Geeter School	K-8	4649 Horn Lake Rd.	416-8157
Gordon Achievement Academy	K-8	815 Breedlove St.	416-3212
Ida B. Wells Academy	K-8	995 S. Lauderdale	416-3210
J.P. Freeman School	K-8	5250 Tulane Rd.	416-3156
Lowrance School	K-8	7740 Lowrance Rd.	416-2330
Riverview School	K-8	241 Majuba	416-7340
Snowden School	K-8	1870 N. Parkway	416-4621

Middle Schools

A. Maceo Walker Middle	6-8	1900 East Raines Rd.	416-1030
American Way Middle	6-8	3805 American Way	416-1250
Bellevue Middle School	6-8	575 S. Bellevue Blvd.	416-4488
Booker T. Washington Middle/High	6-12	715 S. Lauderdale	416-7240
Chickasaw Middle	6-8	4060 Westmont	416-8134
Colonial Middle	6-8	1370 Colonial Rd.	416-8980
Cordova Middle	6-8	900 Sanga Rd.	416-2189
Craigmont Middle	6-8	3455 Covington Pike	416-7780
Dexter Middle	6-8	6988 E. Raleigh LaGrange Rd.	416-0360
Georgian Hills Middle	6-8	3925 Denver Rd.	416-3740
Germantown Middle	6-8	7925 C.D. Smith Rd.	416-0950
Grandview Heights Middle	6-8	2342 Clifton	416-3940
Hamilton Middle	6-8	1478 Wilson St.	416-7832
Havenvue Middle	6-8	1481 Hester	416-3092
Hickory Ridge Middle	6-8	3920 Ridgeway Rd.	416-9337
Highland Oaks Middle	6-8	5600 Meadowbriar Trail	416-0340
Hope Academy	6-12	616 Adams (2nd Floor)	405-8421
Kate Bond Middle	6-8	2737 Kate Bond Rd.	416-0640
Kingsbury Middle	6-8	1276 North Graham	416-6040
Maxine Smith STEAM Academy	6-8	750 E. Parkway	416-4539

Memphis Virtual School	6-12	160 S. Hollywood	416-0115
Mt. Pisgah Middle	6-8	1444 Pisgah Rd.	416-2620
Oakhaven Middle	6-8	3125 Ladbrook	416-2380
Raleigh Egypt Middle	6-8	4215 Alice Ann Dr.	416-4141
Ridgeway Middle	6-8	6333 Quince Rd.	416-1588
Sherwood Middle	6-8	3480 Rhodes	416-4870
Treadwell Middle	6-8	920 N. Highland St.	416-6100
White Station Middle	6-8	5465 Mason	416-2184
Woodstock Middle	6-8	5885 Woodstock Cuba Rd.	416-4180

High Schools

Adolescent Parenting Program	7-12	205 N. Claybrook	416-6321
Bolton High	9-12	7323 Brunswick Rd.	416-1435
Booker T. Washington Middle/High	6-12	715 S. Lauderdale	416-7240
Central High	9-12	306 S. Bellevue	416-7240
Cordova High	9-12	1800 Berryhill Rd.	416-4540
Craigmont High	9-12	3333 Covington Pike	416-4312
Douglass High	9-12	3200 Mt. Olive Rd.	416-0990
East High/T-STEM Academy	9-12	3206 Poplar Ave.	416-6160
George Washington Carver College & Career Academy	9-12	1591 Pennsylvania Ave.	416-7594
Germantown High	9-12	7653 Old Poplar Pike	416-0971
Hamilton High	9-12	1363 Person	416-7838
Hollis F. Price Middle College High	9-12	807 Walker Ave.	435-1765
Hope Academy	6-12	616 Adams (2nd Floor)	405-8421
Kingsbury High	9-12	1270 N. Graham	416-6060
Kingsbury Career & Technical School	9-12	1328 N. Graham	416-6000
Kirby High	9-12	4080 Kirby Parkway	416-1960
Manassas High	9-12	1111 Masassas	416-3244
Melrose High	9-12	2870 Deadrick	416-5974
Memphis Virtual School	6-12	160 S. Hollywood	416-0115
Middle College High	9-12	750 East Parkway	416-4550
Mitchell High	9-12	658 Mitchell Rd.	416-8174
Newcomer International Center	9-12	5151 Scottsdale Ave.	416-6055
Northeast Preparatory Academy	9-12	968 N. Mendenhall Rd.	416-2132
Northwest Preparatory Academy	9-12	1266 Poplar Ave.	416-4400
Oakhaven High	9-12	3125 Ladbrook	416-2300
Overton High	9-12	1770 Lanier Lane	416-2136
Raleigh Egypt High	9-12	3970 Voltaire	416-4108
Ridgeway High	9-12	2009 Ridgeway	416-8820
Sheffield High	9-12	4315 Sheffield	416-2370
Sheffield Career & Technical Center	9-12	4350 Chuck	416-2340
Southwest Career & Technology Center	9-12	3746 Horn Lake Rd.	416-8186
Southwind High	9-12	7900 East Shelby Drive	416-3250
Trezevant High	9-12	3350 N. Trezevant St.	416-3760
Trezevant Career & Technology Center	9-12	3224 Range Line Rd.	416-3800
Westwood High	9-12	4480 Westmont	416-8000
White Station High	9-12	514 S. Perkins	416-8880
Whitehaven High	9-12	4581 Elvis Presley Blvd.	416-3000
Wooddale High	9-12	5151 Scottsdale Ave.	416-2440

Special Education

Avon School	9-12	310 N. Avon Rd.	416-2124
Shrine School	Pre-K -12	4529 Forest View Dr.	416-2400



Pre-K/Early Childhood

Do you have a 4-year-old future scholar? Shelby County Schools' Early Childhood Program is the most important step families can take to guarantee students are prepared for success in Kindergarten and beyond. Every year, Pre-K students score higher in Kindergarten than many of their peers who did not participate in an early childhood program. Studies have also shown that early childhood programs hugely impact long-term academic success. Our Pre-K students exceed goals for foundational skills, language skills and more. With over 50 school-based classrooms and Head Start sites, there's a FREE Pre-K program for you at SCS!

SCS Schools with a Pre-K Program:

*New Alcy Area Elementary
A. B. Hill Elementary
Alton Elementary
Barrett's Chapel
Belle Forest Community School
Berclair Elementary
Bethel Grove Elementary
Brownsville Road Elementary
Bruce Elementary
Cherokee Elementary
Chimneyrock Elementary
Cordova Elementary
Crump Elementary
Cummings School
Dexter Elementary
Doubletree Elementary
Douglass Elementary
Downtown Elementary
Dunbar Elementary
Egypt Elementary
Evans Elementary
Ford Road Elementary
Fox Meadows Elementary
Gardenview Elementary
Germanshire Elementary
Getwell Elementary

Hamilton Elementary
Hamilton High
Hawkins Mill
Hickory Ridge Elementary
Hickory Ridge Elementary
Holmes Rd Elementary
Jackson Elementary
Kate Bond Elementary
Keystone Elementary
Kingsbury Elementary
LaRose Elementary
Levi Elementary
Lowrance Elementary
Lucie E. Campbell
Lucy Elementary
Newberry Elementary
Northaven Elementary
Oak Forest Elementary
Oakhaven Elementary
Oakshire Elementary
*New Parkway Village Elementary
Peabody Elementary
Raleigh-Bartlett Meadows Elementary
Ridgeway Early Learning Center
Riverview Elementary

Robert R. Church Elementary
Ross Elementary
Rozelle Elementary
Scenic Hills Elementary
Sea Isle Elementary
Sharpe Elementary
Sheffield Elementary
Shelby Oaks Elementary
Sherwood Elementary
Snowden Elementary
South Park Elementary
Southwind Elementary
Springdale Elementary
Treadwell Elementary
Vollentine Elementary
William Herbert Brewster Elementary
Wells Station Elementary
Westhaven Elementary
Westside Elementary
Whitehaven Elementary
White Station Elementary
Willow Oaks Elementary
Winchester Elementary



Optional Schools

With 46 elementary, middle and high school programs across Shelby County, there is an Optional school to match your child's unique interests and learning abilities. SCS Optional schools are recognized locally and across Tennessee for their competitive, theme-based programs, such as Transportation-STEM, College Prep, International Baccalaureate (IB), Global Health Studies, International Studies, Creative & Performing Arts (CAPA) and many more. With free tuition, our Optional programs provide creative and rigorous coursework and activities led by teachers who challenge and motivate high-performing students to exceed expectations. Entrance requirements vary by school and program.

Arts & Academics

Colonial Middle

Automotive & AGRI-STEM

Bolton High

Business & Finance

Whitehaven High

Chess & Communication Arts

Douglass School (K-8)

College Prep

Bellevue Middle, Central High, Craigmont High (Intl. Studies), East High (T-STEM), John P. Freeman (1-8), Germantown Middle, Snowden School (1-8), Whitehaven High, White Station High, White Station Middle, Wooddale High

Computer & Environmental Sciences

Cordova Middle

Computer Technology

Delano Elementary

Communication Arts & Public Service

Douglass High

Creative & Performing Arts

Rozelle Elementary, Colonial Middle, Germantown High, Overton High

Developing Masterful Mathematical Minds DM3

Cummings School (1-8)

Dual Language Immersion

Treadwell Elementary

Enriched Academics

William H. Brewster Elementary (MAST), Cordova Elementary, Downtown Elementary, John P. Freeman (1-8), Grahamwood Elementary, Keystone Elementary (SET), Sherwood Elementary, Snowden School (1-8), Willow Oaks Elementary

Environmental Science & Community Service

Riverwood Elementary

Exploratory Learning

Springdale-Memphis Magnet Elementary

Global Health Studies

Kingsbury High

International Baccalaureate

Balmoral-Ridgeway Elementary, Bolton High, Germantown High, Oak Forest Elementary, Ridgeway Middle, Ridgeway High

International Studies

Brownsville Road Elementary, Germantown Elementary, Peabody Elementary, Craigmont Middle, Craigmont High

Montessori-Inspired & Community Service

Double Tree Elementary

Science & Technology

Idlewild Elementary

Science Exploration

Vollentine Elementary

STEM

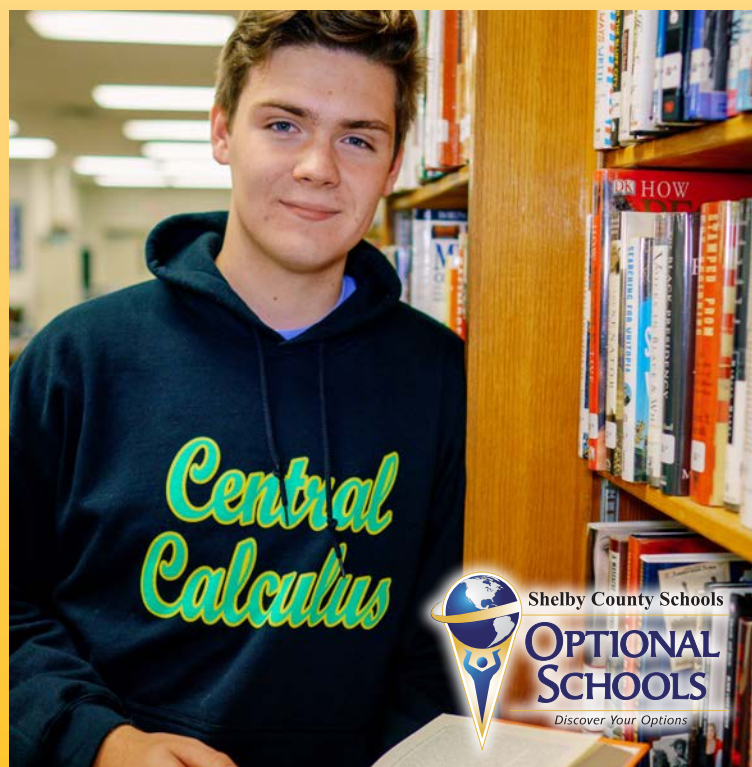
Whitehaven Elementary

STEAM

Havenview Middle, Maxine Smith STEAM Academy

T-STEM

East High



College, Career & Technical Education (CCTE)

We're committed to providing our future graduates with the knowledge and skills to pursue high-demand degrees and careers. SCS offers more than 50 CCTE programs in 15 career clusters defined by the Tennessee Department of Education. Students can earn AP and college credits through dual enrollment, as well as internship opportunities with prominent businesses and over 50 different career certifications to help them enter high-paying sectors of the workforce during high school or after graduation. Each high school (and several middle schools) offers one or more specific CCTE programs, and we have four Career & Technical Centers (CTCs) that offer a wider variety of CCTE programs.

Kingsbury Career and Technology Center

Automotive Maintenance & Light Repair, Barbering, Coding, Cosmetology, Culinary Arts, Digital Arts & Design, Networking Systems, Nursing Services, Residential & Commercial Construction, Structural Systems, Therapeutic Services, Welding

Sheffield Career and Technology Center

Automotive Maintenance & Light Repair, Barbering, Coding, Cosmetology, Culinary Arts, Early Childhood Education Career

Southwest Career and Technology Center

Barbering, Cosmetology, Culinary Arts, Early Childhood Education Careers, Driver's, Education, Machining Technology, Nursing Services, Structural Systems, Veterinary and Animal Science, Welding

Trezevant Career and Technology Center

Banking & Finance, Barbering, Coding, Cosmetology, Culinary Arts, Fire Management Services, Mechanical/Electrical/Plumbing (MEP), Therapeutic Services

Bolton High

Automotive Maintenance & Light Repair, Cosmetology, Early Childhood Education Careers, Supply Chain Management, Emergency Services, Horticulture Science, Structural Systems

Booker T Washington

Cosmetology, Culinary Arts

Central High School

Audio/Visual Production, Coding, Dietetics & Nutrition, Office Management, Sports & Human Performance

Cordova High School

Advanced STEM Applications, Automotive Maintenance & Light Repair, Coding, Cosmetology, Engineering, Machining Technology, Marketing Management, Office Management, Therapeutics Services, Residential & Commercial Construction, Supply Chain Management

Craigmont High School

Advanced STEM Applications, Automotive Maintenance & Light Repair, Coding, Culinary Arts, Digital Arts & Design

Douglass High School

Audio/Visual Production, Coding

East High

Advanced STEM Applications, Audio/Visual Production, Coding

Germantown High School

Automotive Maintenance & Light Repair, Criminal Justice, Cybersecurity, Dietetics & Nutrition, Early Childhood Education Careers, Entrepreneurship, Office Management, Marketing Management, Sports & Human Performance, Structural Systems

Hamilton High School

Advanced STEM Applications, Audio/Visual Production, Cybersecurity, Early Childhood Education Careers, Nursing Services, Office Management

Kirby High School

Agriculture Engineering & Applied Technologies, Automotive Maintenance & Light Repair, Cosmetology, Horticulture Science, Nursing Services

Manassas High

Advanced STEM Applications, Cybersecurity

Melrose High

Barbering, Cosmetology, Criminal Justice, Mechanical/Electrical/Plumbing (MEP), Supply Chain Management, Web Design

Middle College

Advanced STEM Applications, Audio/Visual Production, Coding

Mitchell High School

Marketing Management, Office Management

Northeast Prep Academy

Office Management

Northwest Prep Academy

Office Management

Oakhaven High

Advanced STEM Applications, Business Management, Coding, Marketing Management

Overton High

Audio/Visual Production, Coding, Entrepreneurship, Fashion Design

Raleigh-Egypt High

Advanced STEM Applications, Banking & Finance, Coding, Criminal Justice, Marketing Management

Ridgeway High

Advanced STEM Applications, Business Management, Coding, Emergency Services, Supply Chain Management

Southwind High

Advanced STEM Applications, Business Management, Cosmetology, Culinary Arts, Diagnostic Services, Entrepreneurship, Office Management, Therapeutic Services, Web Design

Westwood High

Advanced STEM Applications, Coding

White Station High

Coding, Marketing Management, Office Management

Whitehaven High

Accounting, Advanced STEM Applications, Automotive Maintenance & Light Repair, Barbering, Business Management, Cosmetology, Entrepreneurship, Mechanical/Electrical/Plumbing (MEP)

Wooddale

Advanced STEM Applications, Business Management, Coding, Web Design





Innovation Zone (IZone 2.0)

Innovation Zone (IZone 2.0) schools use unique instructional strategies and intensive programming and interventions to make dramatic improvements in student achievement. We recruit proven, high-performing teachers and leaders, and all IZone schools feature an extended learning day to help students master core curriculum standards. Our IZone schools also have specialized family support services, including wrap-around resources like clothes closets and counseling programs.

The IZone turnaround model has been recognized nationally and duplicated by numerous districts across the U.S. Since its 2012 launch, IZone schools have repeatedly ranked among the highest in Tennessee for students' academic growth.

Elementary

A. B. Hill Elementary
*New Alcy Elementary
Dunbar Elementary
Ford Road Elementary
Getwell Elementary
Hawkins Mill Elementary
Larose Elementary
Magnolia Elementary
Sheffield Elementary
Winchester Elementary

Middle

American Way Middle
Craigmont Middle
Grandview Heights Middle
Georgian Hills Middle
Raleigh Egypt Middle
Riverview School (K-8)
Woodstock Middle

High

Booker T. Washington
Hamilton High
Manassas High
Oakhaven High
Raleigh Egypt High
Sheffield High
Trezevant High
Westwood High
Wooddale High



Empowerment Zone (E-Zone)

Known to locals as the “Whitehaven Empowerment Zone” or “WEZ,” E-Zone schools are part of a collaborative academic effort to improve student achievement and growth in Memphis’ historic Whitehaven neighborhood. E-Zone schools have uniquely aligned instructional practices and leadership qualities modeled after Whitehaven High School, one of the city’s premier learning institutions. E-Zone schools have extra support staff and programs, including academic coaches and volunteer tutors to drive student achievement and address individual student needs. A one-of-a-kind feature of E-Zone schools is its highly active community network of Whitehaven alumni, business and government leaders, community organizations and volunteers. Additionally, the E-Zone Leadership Council – a community-based governing body of parents, teachers, students and citizens – provide guidance on key school decisions while empowering and supporting schools, students and educators.

Elementary

Geeter School (K-8)
Holmes Road Elementary
John P. Freeman Optional School (K-8)
Oakshire Elementary
Robert R. Church Elementary

Middle

A. Maceo Walker Middle
Geeter School (K-8)
Havenview Middle
John P. Freeman Optional School (K-8)

High

Whitehaven High



Alternative Education Programs

Alternative schools provide innovative, non-traditional academic programs designed to support students with unique educational, behavioral and social needs. Alternative schools improve character and academic achievement through a combination of positive, rigorous classroom instruction and challenging experiences that empower students to think critically, solve problems and grow as young leaders.

Success Programs follow a nationally recognized model serving students who have experienced academic and/or behavioral challenges in a traditional school setting. Success Programs focus on educating the whole child by providing smaller, non-punitive learning communities within the school.

- Gordon Achievement Academy (Grades 1-8)
- Airways Achievement Academy (Grades 1-8)
- G. W. Carver College & Career Academy (9-12)

Choice Schools focus on small learning environments with innovative, personalized instructional plans so parents can choose an educational setting tailored for their child's specific academic and social needs.

- Ida B. Wells Academy (Grades K-8)
- Adolescent Parenting Program (Grades 9-12)
- Newcomer International Center (NIC) (Grades 9-10)

Prep Academies feature innovative and engaging programs that address students' individual academic and developmental needs. Prep Academies offer an extended learning day, summer session and block scheduling, allowing high schools students to earn more credits than traditional students while also receiving more one-on-one support. The instructional program includes online courses, internships for credit, dual enrollment, mini-courses and comprehensive exams for credit. Students can also take technical courses to prepare for career opportunities after graduation.

- Northeast Prep Academy (Grades 9-12)
- Northwest Prep Academy (Grades 9-12)

Transition Programs serve SCS students in grades 6-12 who are discharged from local juvenile justice facilities to prepare them for re-entry into traditional school settings. In addition to certified teachers and administrators, students have access to Behavior Specialists, Professional School Counselors, Psychologists and Social Workers who provide extra personal support through their transition.

- Hope Academy (Grades 6-12)
- Project STAND (G. W. Carver College & Career Academy)



Student Services & Programs

We serve over 100,000 students with a wide variety of unique interests and learning needs. Therefore, we know it's important for schools to provide services and opportunities beyond the classroom curriculum to best support our students and families.

- Advanced Academics
- Athletics (Boys & Girls)
- C.L.U.E. / Gifted Learning Programs
- Coordinated School Health Services
- Counseling & Mental Health Services
- English as a Second Language (ESL)
- Exceptional Children Services (Students with Disabilities)
- Extended Learning Opportunities (Before- & After-School Programs)
- Family & Community Engagement
- Family Resource Centers
- Homebound Student Services
- Homeless Student Services
- J.R.O.T.C.
- Nutrition Services / Farm to School
- Summer Learning Academies
- Summer School
- Transportation Services





SCSK12.ORG #SCSis901