





PROJECT	25413.00
DATE	FEBRUARY 17, 2018
DESIGNED BY	KVLL
CHECKED BY	KVLL
DATE	

REVISIONS	
1	
2	
3	
4	
5	
6	
7	
8	
9	
10	

ABBREVIATIONS

4	AND APPROXIMATELY PLUS MINUS	PR	POLYSTYRENE INSULATION BOARD
5	APPROXIMATELY PLUS MINUS	PL	PLATE
6	APPROXIMATELY PLUS MINUS	PM	PLATE LAMINATE
7	APPROXIMATELY PLUS MINUS	PP	PRELIMINARY
8	APPROXIMATELY PLUS MINUS	PT	PRELIMINARY
9	APPROXIMATELY PLUS MINUS	PTD	PAINTED
10	APPROXIMATELY PLUS MINUS	PTD	PAINTED
11	APPROXIMATELY PLUS MINUS	QTY.	QUANTITY
12	APPROXIMATELY PLUS MINUS	R	RABBIT
13	APPROXIMATELY PLUS MINUS	RD	ROUGH OPENING
14	APPROXIMATELY PLUS MINUS	RE	REINFORCEMENT
15	APPROXIMATELY PLUS MINUS	RENF	REINFORCEMENT
16	APPROXIMATELY PLUS MINUS	RES	RESISTANT
17	APPROXIMATELY PLUS MINUS	RS	ROOF SHEET
18	APPROXIMATELY PLUS MINUS	RU	ROOF UP UNIT
19	APPROXIMATELY PLUS MINUS	SD	SMOKE DETECTOR
20	APPROXIMATELY PLUS MINUS	SECT.	SECTION
21	APPROXIMATELY PLUS MINUS	SK	SKEW
22	APPROXIMATELY PLUS MINUS	SKL	SKEW
23	APPROXIMATELY PLUS MINUS	SM	SMOKE DETECTOR
24	APPROXIMATELY PLUS MINUS	SMO	SMOKE DETECTOR
25	APPROXIMATELY PLUS MINUS	ST	STANDARD
26	APPROXIMATELY PLUS MINUS	STD.	STANDARD
27	APPROXIMATELY PLUS MINUS	STP.	STORAGE
28	APPROXIMATELY PLUS MINUS	TBD	TO BE DETERMINED
29	APPROXIMATELY PLUS MINUS	TR	TRUSS
30	APPROXIMATELY PLUS MINUS	TR	TRUSS
31	APPROXIMATELY PLUS MINUS	TR	TRUSS
32	APPROXIMATELY PLUS MINUS	TR	TRUSS
33	APPROXIMATELY PLUS MINUS	TR	TRUSS
34	APPROXIMATELY PLUS MINUS	TR	TRUSS
35	APPROXIMATELY PLUS MINUS	TR	TRUSS
36	APPROXIMATELY PLUS MINUS	TR	TRUSS
37	APPROXIMATELY PLUS MINUS	TR	TRUSS
38	APPROXIMATELY PLUS MINUS	TR	TRUSS
39	APPROXIMATELY PLUS MINUS	TR	TRUSS
40	APPROXIMATELY PLUS MINUS	TR	TRUSS
41	APPROXIMATELY PLUS MINUS	TR	TRUSS
42	APPROXIMATELY PLUS MINUS	TR	TRUSS
43	APPROXIMATELY PLUS MINUS	TR	TRUSS
44	APPROXIMATELY PLUS MINUS	TR	TRUSS
45	APPROXIMATELY PLUS MINUS	TR	TRUSS
46	APPROXIMATELY PLUS MINUS	TR	TRUSS
47	APPROXIMATELY PLUS MINUS	TR	TRUSS
48	APPROXIMATELY PLUS MINUS	TR	TRUSS
49	APPROXIMATELY PLUS MINUS	TR	TRUSS
50	APPROXIMATELY PLUS MINUS	TR	TRUSS
51	APPROXIMATELY PLUS MINUS	TR	TRUSS
52	APPROXIMATELY PLUS MINUS	TR	TRUSS
53	APPROXIMATELY PLUS MINUS	TR	TRUSS
54	APPROXIMATELY PLUS MINUS	TR	TRUSS
55	APPROXIMATELY PLUS MINUS	TR	TRUSS
56	APPROXIMATELY PLUS MINUS	TR	TRUSS
57	APPROXIMATELY PLUS MINUS	TR	TRUSS
58	APPROXIMATELY PLUS MINUS	TR	TRUSS
59	APPROXIMATELY PLUS MINUS	TR	TRUSS
60	APPROXIMATELY PLUS MINUS	TR	TRUSS
61	APPROXIMATELY PLUS MINUS	TR	TRUSS
62	APPROXIMATELY PLUS MINUS	TR	TRUSS
63	APPROXIMATELY PLUS MINUS	TR	TRUSS
64	APPROXIMATELY PLUS MINUS	TR	TRUSS
65	APPROXIMATELY PLUS MINUS	TR	TRUSS
66	APPROXIMATELY PLUS MINUS	TR	TRUSS
67	APPROXIMATELY PLUS MINUS	TR	TRUSS
68	APPROXIMATELY PLUS MINUS	TR	TRUSS
69	APPROXIMATELY PLUS MINUS	TR	TRUSS
70	APPROXIMATELY PLUS MINUS	TR	TRUSS
71	APPROXIMATELY PLUS MINUS	TR	TRUSS
72	APPROXIMATELY PLUS MINUS	TR	TRUSS
73	APPROXIMATELY PLUS MINUS	TR	TRUSS
74	APPROXIMATELY PLUS MINUS	TR	TRUSS
75	APPROXIMATELY PLUS MINUS	TR	TRUSS
76	APPROXIMATELY PLUS MINUS	TR	TRUSS
77	APPROXIMATELY PLUS MINUS	TR	TRUSS
78	APPROXIMATELY PLUS MINUS	TR	TRUSS
79	APPROXIMATELY PLUS MINUS	TR	TRUSS
80	APPROXIMATELY PLUS MINUS	TR	TRUSS
81	APPROXIMATELY PLUS MINUS	TR	TRUSS
82	APPROXIMATELY PLUS MINUS	TR	TRUSS
83	APPROXIMATELY PLUS MINUS	TR	TRUSS
84	APPROXIMATELY PLUS MINUS	TR	TRUSS
85	APPROXIMATELY PLUS MINUS	TR	TRUSS
86	APPROXIMATELY PLUS MINUS	TR	TRUSS
87	APPROXIMATELY PLUS MINUS	TR	TRUSS
88	APPROXIMATELY PLUS MINUS	TR	TRUSS
89	APPROXIMATELY PLUS MINUS	TR	TRUSS
90	APPROXIMATELY PLUS MINUS	TR	TRUSS
91	APPROXIMATELY PLUS MINUS	TR	TRUSS
92	APPROXIMATELY PLUS MINUS	TR	TRUSS
93	APPROXIMATELY PLUS MINUS	TR	TRUSS
94	APPROXIMATELY PLUS MINUS	TR	TRUSS
95	APPROXIMATELY PLUS MINUS	TR	TRUSS
96	APPROXIMATELY PLUS MINUS	TR	TRUSS
97	APPROXIMATELY PLUS MINUS	TR	TRUSS
98	APPROXIMATELY PLUS MINUS	TR	TRUSS
99	APPROXIMATELY PLUS MINUS	TR	TRUSS
100	APPROXIMATELY PLUS MINUS	TR	TRUSS

MATERIAL SYMBOLS

	EARTH COMPACT FILL		RIGID INSULATION
	GRAVEL		EIFS
	CONCRETE		DRYWALL
	SANDMORTAR		INSULATED WALL/CEILING PANEL
	CONCRETE BLOCK		ACOUSTICAL TILE
	BRICK		GLASS
	STONE		
	STEEL/OTHER METALS		
	ROUGH WOOD		
	WOOD BLOCKING		
	PLYWOOD		
	BATT/LOOSE FILL		

SYMBOLS LEGEND

	VIEW NUMBER		SECTION MARK
	BOUNDARY		ELEVATION MARK
	INTERIOR ELEVATION MARK		PANEL ELEVATION MARK
	FINISH FLOOR ELEVATION		WINDOW TAG
	KEY NOTE		WALL TAG
	DOOR TAG		REGION MARK
	REGION CLOUD		NORTH ARROW
	ROOM TAG		EXIT SIGN
	WALL MOUNT ILLUMINATED FACE		COLUMN URB
	SECTIONAL ARROW		MANUAL FIRE ALARM PULL BOX
	MATCHLINE		MATCHLINE





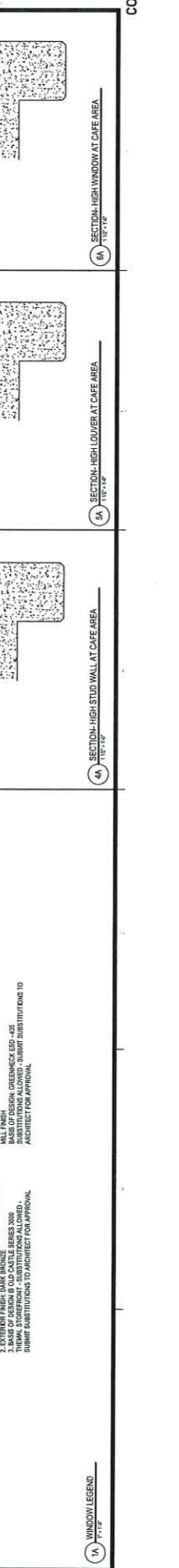
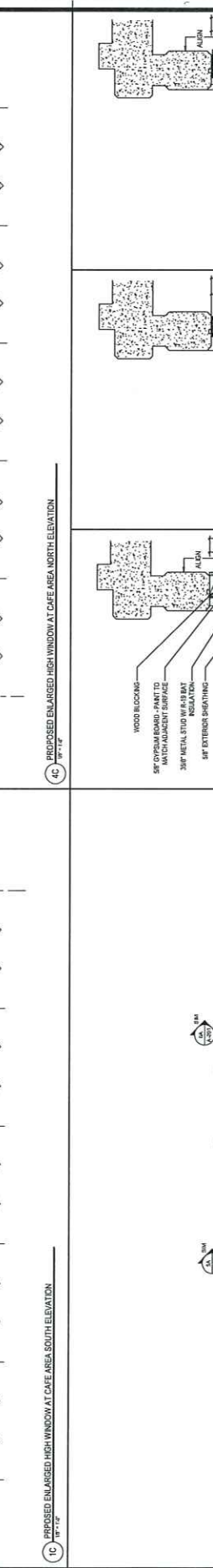
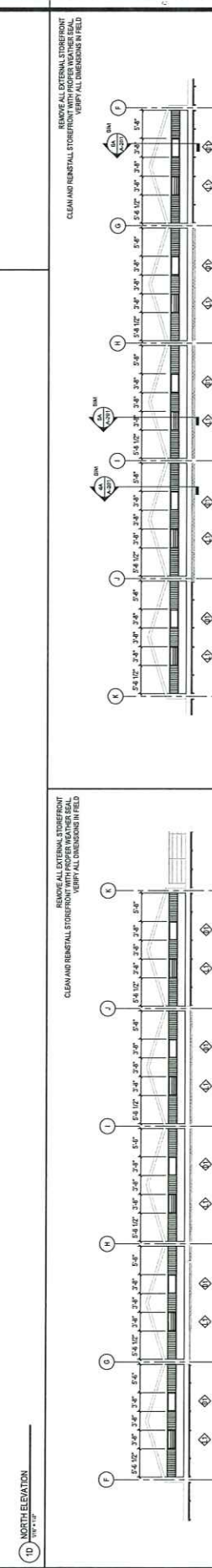
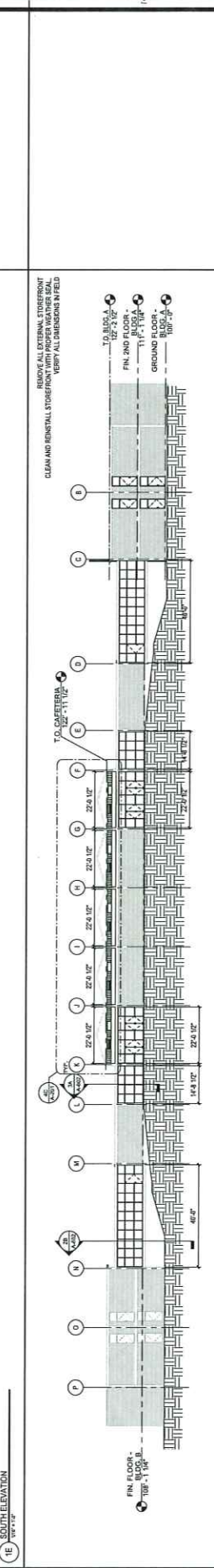
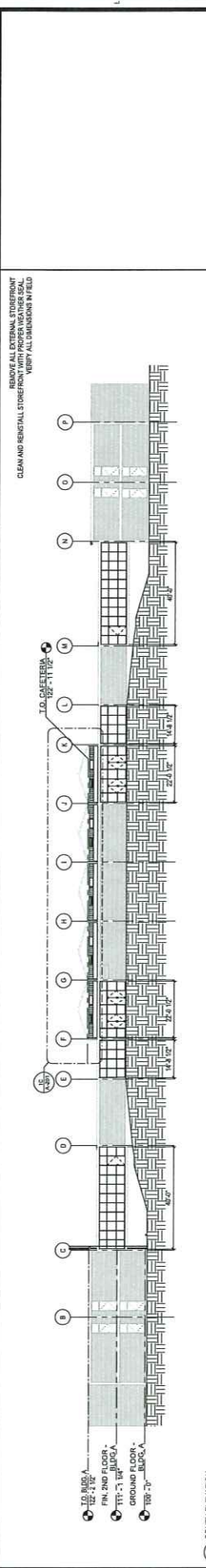


NO.	DATE	BY	CHKD.	DESCRIPTION
1	2024.03.05	MS	MS	ISSUED FOR PERMIT
2	2024.03.05	MS	MS	ISSUED FOR PERMIT
3	2024.03.05	MS	MS	ISSUED FOR PERMIT
4	2024.03.05	MS	MS	ISSUED FOR PERMIT
5	2024.03.05	MS	MS	ISSUED FOR PERMIT
6	2024.03.05	MS	MS	ISSUED FOR PERMIT
7	2024.03.05	MS	MS	ISSUED FOR PERMIT
8	2024.03.05	MS	MS </tr	

**REVISIONS**

PROJECT: 20240305  
 DATE: FEBRUARY 11, 2024  
 DRAWN BY: (blank)  
 CHECKED BY: MS  
 NO.

**CONSTRUCTION SET**



**1E SOUTH ELEVATION**  
 10'-11 1/2"

**1D NORTH ELEVATION**  
 10'-11 1/2"

**1C PROPOSED ENLARGED HIGH WINDOW AT CAFE AREA SOUTH ELEVATION**  
 10'-11 1/2"

**1B PROPOSED ENLARGED HIGH WINDOW AT CAFE AREA NORTH ELEVATION**  
 10'-11 1/2"

**1A WINDOW LEGEND**  
 10'-11 1/2"

**WINDOW LEGEND**  
 1. EXTERIOR FRAMING TYPE 2 X 4 1/2" THERMAL BROKEN  
 2. EXTERIOR FINISH DARK BRONZE  
 3. EXTERIOR FINISH GREENGLASS SED. GLAZ  
 4. THERM. STOREFRONT - SUBSTITUTIONS ALLOWED - SUBMIT SUBSTITUTIONS TO ARCHITECT FOR APPROVAL

**LOUVER**  
 4" DEPTH  
 MILL FINISH  
 SUBSTITUTIONS ALLOWED - SUBMIT SUBSTITUTIONS TO ARCHITECT FOR APPROVAL

**STOREFRONT WINDOW SYSTEM**  
 1. EXTERIOR FRAMING TYPE 2 X 4 1/2" THERMAL BROKEN  
 2. EXTERIOR FINISH DARK BRONZE  
 3. EXTERIOR FINISH GREENGLASS SED. GLAZ  
 4. THERM. STOREFRONT - SUBSTITUTIONS ALLOWED - SUBMIT SUBSTITUTIONS TO ARCHITECT FOR APPROVAL







**E. IBC 2021 - STATEMENT OF SPECIAL INSPECTIONS**

1. GENERAL
  - A. THIS STATEMENT OF SPECIAL INSPECTIONS IS SUBMITTED IN ACCORDANCE WITH SECTION 1704 OF THE INTERNATIONAL BUILDING CODE (IBC). IT INCLUDES A SCHEDULE OF SPECIAL INSPECTIONS TO BE PERFORMED DURING CONSTRUCTION AND TESTING REQUIREMENTS FOR SEISMIC OR WIND RESISTANCE, IF APPLICABLE.
  - B. IT IS THE CONTRACTOR'S RESPONSIBILITY TO ENSURE THE REQUIRED SPECIAL INSPECTIONS AND TESTING ARE PERFORMED IN ACCORDANCE WITH THE BUILDING CODE AND TESTING PER THE BUILDING CODE ARE NOT LISTED HERE. REFER TO THE CONTRACT FOR THE RESPONSIBILITY TO COMPLY WITH THE CONTRACT REQUIREMENTS FOR SPECIAL INSPECTIONS AND TESTING.
  - C. PROJECT SITE VISITS DO NOT CONSTITUTE AND ARE NOT A SUBSTITUTE FOR SPECIAL INSPECTIONS.
  - D. REFER TO SPECIFICATIONS FOR ADDITIONAL TESTING REQUIREMENTS, WHERE CONTACTS OCCUR, THE MOST STRINGENT REQUIREMENT SHALL GOVERN.
  - E. ARCHITECTURAL, MECHANICAL, AND ELECTRICAL COMPONENTS REQUIRING SPECIAL INSPECTIONS AND TESTING PER THE BUILDING CODE ARE NOT LISTED HERE. REFER TO THE CONTRACT FOR THE RESPONSIBILITY TO COMPLY WITH THE CONTRACT REQUIREMENTS FOR SPECIAL INSPECTIONS AND TESTING FOR THESE COMPONENTS.
2. SPECIAL INSPECTOR QUALIFICATIONS
  - A. THE SPECIAL INSPECTOR SHALL BE EVALUATED BY THE OWNER OR AN AGENT OF THE OWNER TO DETERMINE IF THE SPECIAL INSPECTOR IS QUALIFIED TO PERFORM THE WORK.
  - B. PRIOR TO THE START OF CONSTRUCTION, THE SPECIAL INSPECTOR SHALL PROVIDE WRITTEN DOCUMENTATION TO THE BUILDING OFFICIAL DEMONSTRATING THE SPECIAL INSPECTOR'S QUALIFICATIONS AND EXPERIENCE TO THE BUILDING OFFICIALS WHO WILL PERFORM THE SPECIAL INSPECTIONS AND TESTS DURING CONSTRUCTION.
3. ACCESS FOR SPECIAL INSPECTIONS
  - A. THE CONSTRUCTION OR WORK FOR WHICH THE SPECIAL INSPECTIONS OR TESTING IS REQUIRED SHALL BE ACCESSIBLE TO THE SPECIAL INSPECTOR AT ALL TIMES OR TESTING PURPOSES UNTIL COMPLETION OF THE REQUIRED SPECIAL INSPECTION.
4. REPORT REQUIREMENTS
  - A. THE SPECIAL INSPECTOR SHALL KEEP RECORDS OF SPECIAL INSPECTIONS AND TESTS PERFORMED DURING CONSTRUCTION AND TESTING AND SHALL MAKE THEM AVAILABLE TO THE BUILDING OFFICIAL AND TO THE REGISTERED DESIGN PROFESSIONAL AS REQUESTED. THE REPORT SHALL INDICATE THAT WORK INSPECTED OR TESTED CONFORMS TO THE BUILDING CODE. DISCREPANCIES SHALL BE BROUGHT TO THE IMMEDIATE ATTENTION OF THE REGISTERED DESIGN PROFESSIONAL IN WRITING. THE REGISTERED DESIGN PROFESSIONAL SHALL BE BROUGHT TO THE ATTENTION OF THE BUILDING OFFICIAL AND THE REGISTERED DESIGN PROFESSIONAL IN WRITING PRIOR TO THE COMPLETION OF THAT WORK. THE REGISTERED DESIGN PROFESSIONAL SHALL BE BROUGHT TO THE ATTENTION OF THE REGISTERED DESIGN PROFESSIONAL IN WRITING PRIOR TO THE COMPLETION OF THAT WORK. THE REGISTERED DESIGN PROFESSIONAL SHALL BE BROUGHT TO THE ATTENTION OF THE REGISTERED DESIGN PROFESSIONAL IN WRITING PRIOR TO THE COMPLETION OF THAT WORK.
  - B. THE REGISTERED DESIGN PROFESSIONAL SHALL BE BROUGHT TO THE ATTENTION OF THE REGISTERED DESIGN PROFESSIONAL IN WRITING PRIOR TO THE COMPLETION OF THAT WORK.
  - C. THE REGISTERED DESIGN PROFESSIONAL SHALL BE BROUGHT TO THE ATTENTION OF THE REGISTERED DESIGN PROFESSIONAL IN WRITING PRIOR TO THE COMPLETION OF THAT WORK.
  - D. THE REGISTERED DESIGN PROFESSIONAL SHALL BE BROUGHT TO THE ATTENTION OF THE REGISTERED DESIGN PROFESSIONAL IN WRITING PRIOR TO THE COMPLETION OF THAT WORK.
5. FABRICATION ITEMS
  - A. WHERE FABRICATION OF STRUCTURAL LOAD-BEARING OR LATERAL LOAD-RESISTING MEMBERS IS REQUIRED, THE SPECIAL INSPECTOR SHALL BE NOTIFIED IN WRITING BY THE REGISTERED DESIGN PROFESSIONAL PRIOR TO FABRICATION.
6. INSPECTION OF STRUCTURAL STEEL
  - A. THE SPECIAL INSPECTOR SHALL INSPECT THE FABRICATION OF STRUCTURAL STEEL MEMBERS, INCLUDING STRUCTURAL STEEL JOINTS, IN ACCORDANCE WITH THE QUALITY ASSURANCE INSPECTION REQUIREMENTS OF AISC 308.
7. INSPECTION OF CONCRETE CONSTRUCTION
  - A. THE SPECIAL INSPECTOR SHALL INSPECT THE CONSTRUCTION OF CONCRETE CONSTRUCTION IN ACCORDANCE WITH THE QUALITY ASSURANCE INSPECTION REQUIREMENTS OF AISC 308.
8. SPECIAL INSPECTIONS OF REINFORCING BARS AND QUALIFICATIONS OF SPECIAL INSPECTORS FOR REINFORCING BARS SHALL BE IN ACCORDANCE WITH THE REQUIREMENTS OF AWS D1.4 FOR SPECIAL INSPECTION AND OF AWS D1.1 FOR SPECIAL INSPECTOR QUALIFICATION.
  - A. THE SPECIAL INSPECTOR SHALL INSPECT THE REINFORCING BARS IN ACCORDANCE WITH THE REQUIREMENTS OF AWS D1.4 FOR SPECIAL INSPECTION AND OF AWS D1.1 FOR SPECIAL INSPECTOR QUALIFICATION.
  - B. THE BUILDING OFFICIAL SHALL REQUIRE TESTING OF MATERIALS IN ACCORDANCE WITH THE APPROPRIATE STANDARDS AND CRITERIA FOR THE MATERIAL IN CHAPTERS 19 AND 20 OF AISC 308.
9. INSPECTION OF JOINTS
  - A. SPECIAL INSPECTIONS AND TESTS OF EXISTING SITE SOIL CONDITIONS, FILL PLACEMENT, AND LOAD-BEARING REQUIREMENTS SHALL BE PERFORMED IN ACCORDANCE WITH THE QUALITY ASSURANCE INSPECTION REQUIREMENTS OF AISC 308. THE REGISTERED DESIGN PROFESSIONAL SHALL BE BROUGHT TO THE ATTENTION OF THE REGISTERED DESIGN PROFESSIONAL IN WRITING PRIOR TO THE COMPLETION OF THAT WORK.
10. INSPECTION OF FABRICATED ITEMS
  - A. SPECIAL INSPECTIONS OF FABRICATED ITEMS SHALL BE PERFORMED IN ACCORDANCE WITH SECTION 1704.13.

**REQUIRED SPECIAL INSPECTIONS AND TESTS OF CONCRETE CONSTRUCTION**  
TABLE 1704.3

TYPE	CONTINUOUS INSPECTION	PERIODIC INSPECTION	REFERENCED INSPECTION	BC REFERENCE	RECD
1. INSPECT REINFORCEMENT, INCLUDING PRESTRESSING TENDONS, AND VERIFY PLACEMENT.		X	ACI 318, CH 20.2.2, 20.3, 20.4, 19.6.3		
2. REINFORCING BARS/REINFORCING BARS OTHER THAN ASTM 1996.			AWSD1.4		
3. INSPECT SINGLE FILED WELDERS, MAXIMUM SIX.		X	ACI 318, 20.6.4		
4. INSPECT ALL OTHER WELDERS.		X			
5. INSPECT ANCHORS.		X	ACI 318, 17.8.2		
6. INSPECT ANCHORS POST-INSTALLED IN HARDENED CONCRETE MEMBERS.		X			
7. MECHANICAL ANCHORS AND ADHESIVE ANCHORS NOT DEFINED IN IBC.		X	ACI 318, 17.8.2		
8. MECHANICAL ANCHORS AND ADHESIVE ANCHORS NOT DEFINED IN IBC.		X	ACI 318, 17.8.2	1904.1.10.2	
9. VERIFY USE OF REQUIRED UNDESIGN.		X	ACI 318, 20.4.4		
10. PRIOR TO CONCRETE PLACEMENT FABRICATE SPECIMENS FOR TESTING OF CONCRETE STRENGTH, CURING TEMPERATURE, AND SETBACK TEMPERATURE OF THE CONCRETE.		X	ASTM C107		
11. INSPECT CONCRETE AND SHOOTCOTE PLACEMENT FOR PROPER APPLICATION TECHNIQUES.		X	ACI 318, 20.5		
12. VERIFY MAINTENANCE OF SPECIFIED CURING TEMPERATURE AND APPLICATION TECHNIQUES.		X	ACI 318, 20.5.2.08.5.5		
13. INSPECT PRESTRESSED CONCRETE FOR:					
A. APPLICATION OF PRESTRESSING FORCES, AND		X	ACI 318, 20.10		
B. GROUTING OF JOINED PRESTRESSING TENDONS.		X	ACI 318, 20.9		
14. INSPECT LOCATION OF PRECAST CONCRETE MEMBERS.		X			
15. INSPECT LOCATION OF PRECAST CONCRETE MEMBERS FOR REINFORCEMENT AT JOINTS CLASSIFIED AS HAZARDOUS OR HIGH SEISMICITY. THE SPECIAL INSPECTOR SHALL BE BROUGHT TO THE ATTENTION OF THE REGISTERED DESIGN PROFESSIONAL TO SEISMIC DESIGN CATEGORY, D, E, OR F. INSPECT JOINT CONNECTIONS AND REINFORCEMENT IN THE FIELD FOR:					
A. INSTALLATION OF THE EMBEDDED PARTS		X	ACI 318, 20.13.3		
B. REPLACEMENT OF THE CONTINUITY OF REINFORCEMENT		X	ACI 318, 20.11.2		
C. CROSS JOINTS		X	ACI 318, 20.11.2.01		
D. JOINTS IN THE CONNECTIONS IN FIELD		X	ACI 318, 20.11.2.01		
16. INSPECT INSTALLATION TOLERANCES OF PRECAST CONCRETE DIAPHRAGM CONNECTIONS FOR COMPLIANCE WITH ACI 308.4.		X	ACI 318, 20.13.3		
17. VERIFY FINISH CONCRETE STRENGTH PRIOR TO STRESSING OF SHORES AND FORMS FROM BEAMS AND STRUCTURAL SLABS.		X	ACI 318, 20.12		
18. INSPECT FORMWORK FOR SHAPE, LOCATION, AND DIMENSIONS OF THE CONCRETE MEMBER BEING FORMED.		X	ACI 318, 20.11.2.10		

**REQUIRED SPECIAL INSPECTIONS AND TESTS OF SOIL**  
TABLE 1704.4

TYPE	CONTINUOUS INSPECTION	PERIODIC INSPECTION	RECD
1. VERIFY MATERIAL BELOW SHALLOW FOUNDATIONS ARE ADEQUATE TO ACHIEVE THE DESIGN BEARING CAPACITY.		X	
2. VERIFY SOIL TO PROPER DEPTH AND HAVE REACHED PROPER MATERIAL.		X	
3. PERFORM CLASSIFICATION AND TESTING OF COMPACTED FILL MATERIALS.		X	
4. IN THE ABSENCE OF SUFFICIENT DATA OR DOCUMENTATION PROVING EVIDENCE OF APPROVED GEOTECHNICAL REPORT, VERIFY PROPERTIES AND UPLIFT CAPACITIES OF SOILS TO BE USED IN CONSTRUCTION OF COMPACTED FILL.		X	
5. PRIOR TO PLACEMENT OF COMPACTED FILL, INSPECT SUBGRADE AND VERIFY THAT SITE HAS BEEN PREPARED PROPERLY.		X	

REVISIONS

NO.	DATE	DESCRIPTION
1		
2		
3		
4		
5		
6		
7		
8		
9		
10		

PROJECT: 204110  
DATE: FEBRUARY 11, 2020  
DRAWN BY: HT  
DESIGNED BY: HT  
CHECKED BY: HT



**MCS - RICHLAND ELEMENTARY SCHOOL**  
5440 RICH ROAD  
MEMPHIS, TN 38120



**S-001**  
REGISTERED STATEMENT OF SPECIAL INSPECTIONS

CONSTRUCTION SET

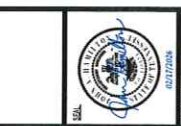




NO.	DATE	DESCRIPTION
1	02/17/2028	ISSUED FOR PERMITS
2		
3		
4		
5		
6		
7		
8		
9		
10		

Pickering  
 4555 Highway 101, Suite 100, Memphis, TN 38120  
 (901) 525-1000

MSCS RICHLAND ELEMENTARY SCHOOL  
 5440 RICH ROAD  
 MEMPHIS, TN 38120



PROJECT: 23402J  
 DATE: FEBRUARY 17, 2028  
 DRAWN BY: JH  
 CHECKED BY: JH

CONSTRUCTION SET  
 REVISION  
 PLUMBING PLAN

PLUMBING LEGEND	
SYMBOL	DESCRIPTION
---	SANITARY SERVICES IN PROJECT
---	RAN LACERS EXISTING
---	GRADE CLEARCUT
---	WALL CLEARCUT
---	CONNECT TO EXISTING
---	PIPE TO BE REMOVED
---	PIPE TO BE REPAIRED

- ### SPECIFICATIONS
- PRODUCTS**
- A. SANITARY SERVICES PIPING (SCHED. 40)**
1. PVC PIPE: ASTM D 2688, SCHEDULE 40, SCHEDULE 40 PVC.
  2. FITTINGS: PVC COUPLER, SOLVENT WELD WITH ASTM D 2688 SOLVENT CEMENT.
- B. SANITARY SERVICES PIPING (SCHED. 40)**
1. PVC PIPE: ASTM D 2688, SCHEDULE 40, SCHEDULE 40 PVC.
  2. FITTINGS: PVC COUPLER, SOLVENT WELD WITH ASTM D 2688 SOLVENT CEMENT.
- C. PPE HANGERS AND SUPPORTS**
1. PLUMBING PIPING: 1/2" A W/ITER PIPING.
  2. HANGERS: 1/2" X 1/2" X 1/2" W/ITER PIPING.
  3. SUPPORTS: 1/2" X 1/2" X 1/2" W/ITER PIPING.
- PIPE SIZE**
- |                |      |
|----------------|------|
| 1/2" TO 1 1/4" | 3/8" |
| 1 1/2" TO 2"   | 1/2" |
| 2 1/2" TO 3"   | 3/4" |

### GENERAL PLUMBING NOTES

1. THESE DRAWINGS ARE DIAGNOSTIC AND SHOW GENERAL PLUMBING AND TO CONFIRM SPACE ALLOCATIONS.
2. SEE ARCHITECTURAL AND STRUCTURAL DRAWINGS FOR ALL BUILDING CODES AND STATE HEALTH REGULATIONS HAVING JURISDICTION.
3. CONTRACTOR SHALL VERIFY ALL PERMITS PRIOR TO BEGINNING WORK.
4. ALL WORK SHALL CONFORM TO THE LOCAL PLUMBING CODE, LOCAL BUILDING CODES AND STATE HEALTH REGULATIONS HAVING JURISDICTION.
5. ELECTRICAL AND MECHANICAL DRAWINGS AND COORDINATE HIS WORK WITH ALL OTHER TRADES AND EQUIPMENT TO BE INSTALLED. AVOID ALL INTERFERENCE WITH EXISTING AND NEW EQUIPMENT, WALLS, WINDOWS, ETC. NOTIFY ARCHITECT OF ANY CONFLICTS.
6. CONTRACTOR MAY REQUEST PLUMBING TO AVOID CONTACT WITH OTHER TRADES. NOTIFY ARCHITECT OF ANY CONFLICTS.
7. NOTIFY ARCHITECT PRIOR TO THE APPROVAL OF THE ARCHITECT ENGINEER, CONTRACTOR ALL VOLTAGES, ELECTRICAL GAUGES, ETC. OF ELECTRICAL EQUIPMENT PRIOR TO ORDERING. ALL WORK TO BE INSTALLED BY GENERAL CONTRACTOR AS REQUIRED FOR PLUMBING INSTALLATIONS.
8. PLUMBING CONTRACTOR SHALL FURNISH ACCESS PANELS TO BE INSTALLED BY OTHER TRADES. PROVIDER ACCESS PANELS SHALL BE ACCESSIBLE.
9. PROVIDER ANCHORS FOR ALL FITTINGS THAT DO NOT HAVE SPOKES/STOPS.
10. SLEEVES SHALL BE INSTALLED WHERE PIPING PASSES THROUGH STRUCTURE.
11. SLEEVES SHALL BE INSTALLED WHERE PIPING PASSES THROUGH WITH AN APPROVED LISTED THROUGH PENETRATION TO MAINTAIN THE INTEGRITY OF THE WALL OR FLOOR.
12. PPE VIBRATION AND/OR PIPE SHAKING SHALL NOT BE PERMITTED.
13. PROVIDE SUSTAINABLE BACKING AND SUPPORT FOR ALL PLUMBING FITTINGS.
14. OFFSET ALL VOLTAGES AS REQUIRED WHETHER OR NOT SHOWN ON DRAWINGS, AWAY FROM ALL INTERFERENCE WHETHER OR NOT SHOWN ON PLANS.
15. ALL PIPING SHALL BE LABELED.
16. ALL HOLES THRU CONCRETE SHALL BE CORE-DRELLED, SAW-CUT ALL HOLES THAT REQUIRE BRICKWORK AND BENCHING.
17. CONTRACTOR SHALL VERIFY ALL EXISTING SERVICES PRIOR TO STARTING ANY WORK.
18. THE RESPONSIBILITY OF THE CONTRACTOR TO OBTAIN THE ALL NEEDED DETAIL DRAWINGS IS NOTED IN AREAS THAT ARE NOT SUBJECT TO FREEZING TEMPERATURES. IF PIPING IS SHOWN IN SUCH AREAS AND NO PROVIDED DETAIL DRAWINGS ARE SHOWN, THE CONTRACTOR SHALL NOTIFY THE ARCHITECT IMMEDIATELY.

### KEYNOTES:

1. CONNECT EXISTING HVAC CONDENSATE DRAIN INTO NEW SANITARY PPE.

